



Loxley Homes

Large five bedroom detached home with integral garage

Approx. gross internal floor area 2007sq.ft/186sq.m

Ground Floor

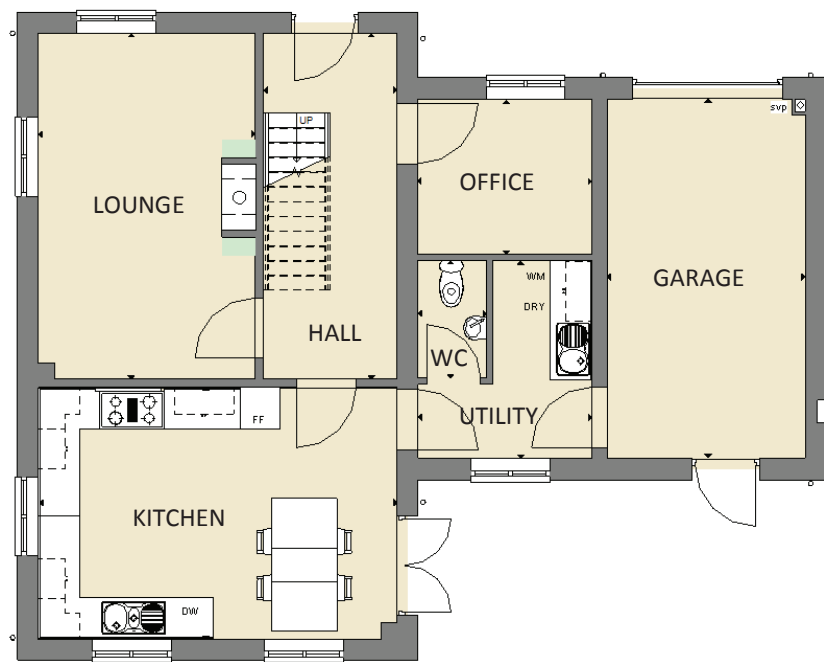
Lounge	10'7" x 17'1"	3.28 x 5.22m	Dresser	7'1" x 8'3"	2.17 x 2.54m
Kitchen/Dining	12'4" x 17'7"	3.80 x 5.41m	Bedroom 2	12'9" x 10'7"	3.94 x 3.28m
Utility	8'6" x 9'7"	2.63 x 2.98m	En-suite	3'9" x 7'9"	1.18 x 2.40m
WC	3'4" x 5'8"	1.04 x 1.77m	Bedroom 3	11'3" x 12'4"	3.45 x 3.80m
Office	8'6" x 7'7"	2.63 x 2.34m	Bath	6'1" x 8'5"	1.88 x 2.62m
Garage	9'8" x 17'7"	3.00 x 5.40m			

First Floor

Master Bedroom	11'8" x 17'9"	3.60 x 5.47m
Master En-suite	7'11" x 9'2"	2.17 x 2.81m

Second Floor

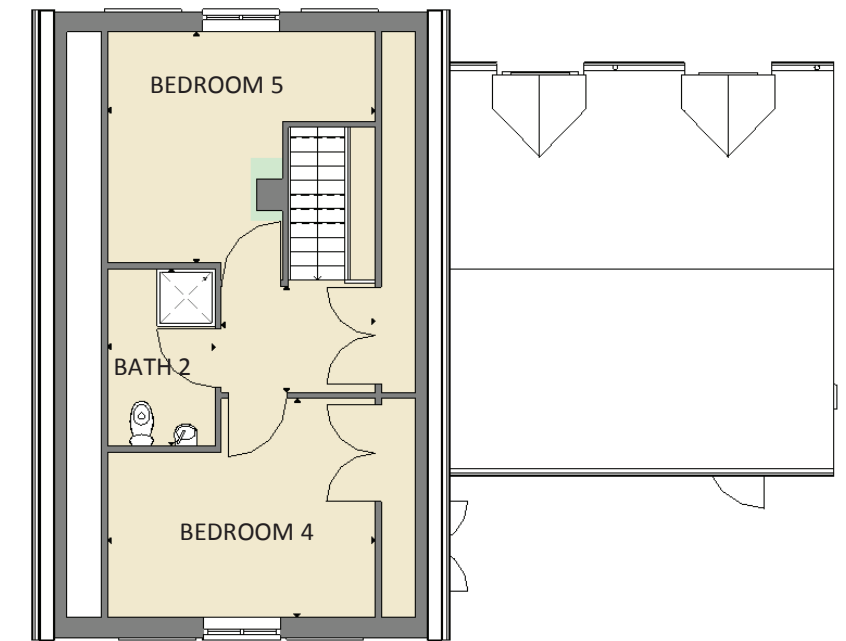
Bedroom 4	13'6" x 11'8"	4.17 x 3.60m
Bedroom 5	13'6" x 14'2"	4.17 x 4.32m
Bath 2	5'5" x 9'1"	1.68 x 2.77m



GROUND FLOOR



FIRST FLOOR



SECOND FLOOR

Whilst every attempt has been made to ensure the accuracy of the floor plans contained here, measurements of doors, windows, rooms and any other measurement are approximate and no responsibilities taken for error, omission or mis-statement. For illustrative purposes only and should be used as such by any prospective purchaser.